



G14B IP BEAM



Product parameters

Optical system

Source: Philips Platinum 14R, 280W

Fixture CT: 7100K

Lamp life expectancy : 1,500h

Fixture output: 8,600lm

Movement

Pan: 540 ° /630 ° optional(16 bit)

Tilt: 270 ° (16 bit)

Auto X/Y repositioning

Color system



CMY color mixing

1 Color wheel: 13 dichroic filters + open

Gobo system

1 Rotating gobo wheel: 8 interchangeable gobos + open. Gobo OD: 14mm

1 Static gobo wheel: 13 indexable gobos + open

Effects

Motorized focus

Beam angle: 2.5 °

2 Rotating prisms: 5 facet and 32 facet, dynamic prism morph

Frost

Dimming: 0-100% linear dimming

Shutter: mechanical with various speed

Protection rating

IP65 (IP66 optional)

Display

Battery operated for fast addressing, 15 seconds standby auto lock

Pan/tilt disengage (hold Left arrow and Right arrow buttons)

Software

Upgrade with DMX

Remote reset DMX address and fixture by DMX

Run time of fixture and light source

3 Control channel modes: 19/17/28CH

Control

Input signal isolation

Auto thermal protection circuit

Optional installed wireless receiver

Art-Net control

RDM protocol



Electric parameter

AC100-240V, 50/60Hz

Power: 500W

Dimension and weight


Product dimension: 44.5x33.2x68.0cm


Packing dimension (carton): 79.5x56.0x46.5cm

Net weight: 35.0kgs

Gross weight (carton): 40.5kgs

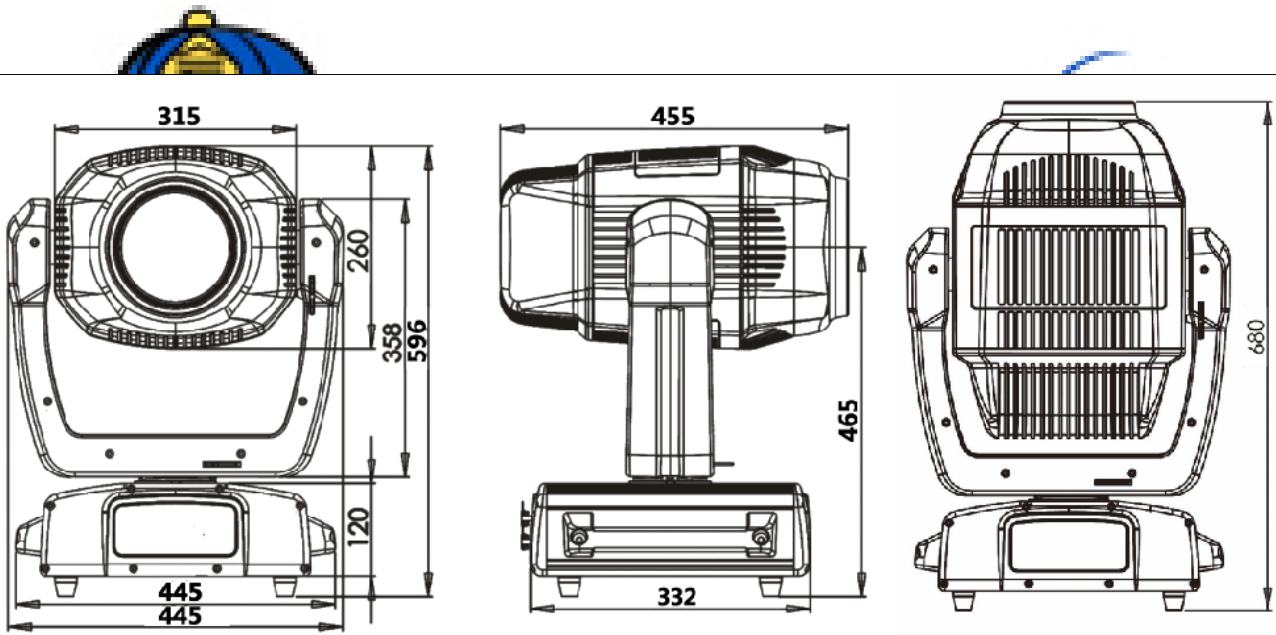
Colours/ Gobos

COLOR WHEEL: 

ROTATING GOBO WHEEL: 

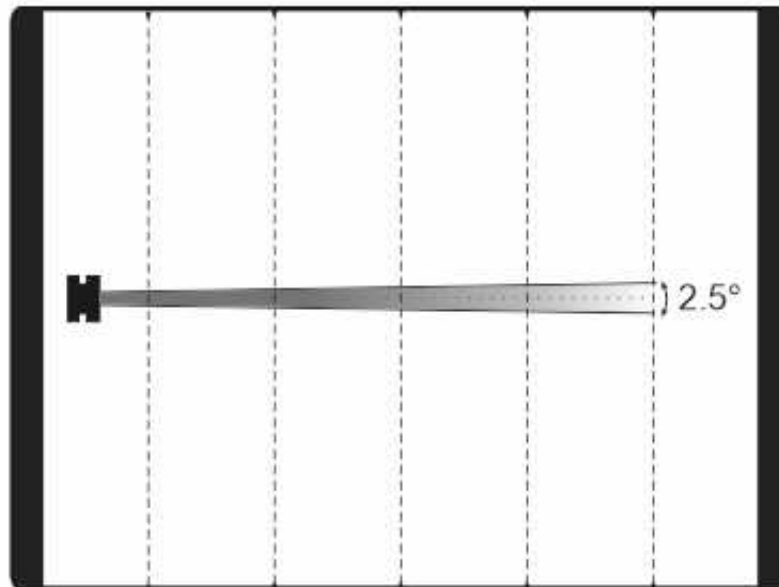
STATIC GOBO WHEEL: 

Dimensions



Photometrics

Intensity LUX (2.5°) 307800 136800 81050 36022 12968



Distance(m)	10	15	20	30	50
Diameter(m)	Φ0.4	Φ0.7	Φ0.9	Φ1.3	Φ2.2



Errors and omissions are possible. All specifications are subject for change without prior notice.