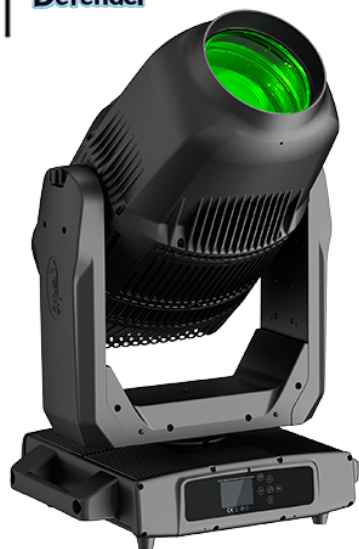


S550H IP HYBRID

SMART Defender



Product parameters

Optical system

Source: Philips Platinum 25R, 550W

Fixture CT: 6400K

Light source life expectancy : 1,500 hours Average Light Source Life*

*Testing conditions in the lab may differ based on various factors.

Fixture output: 22,000lm

Movement

Pan: 540 ° /630 ° optional(16 bit)

Tilt: 270 ° (16 bit)

Auto X/Y repositioning

Color system

CMY+CTO color mixing

1 Color wheel: 14 dichroic filters + open

Gobo system

1 Rotating gobo wheel: 8 interchangeable gobos + open. Gobo OD: 16.3mm

1 Static gobo wheel: 14 gobos + open

1 Animation wheel

Effects

Motorized focus

Zoom range: beam mode: 2.2 ° -27 ° , spot mode: 3 ° -42 ° , wash mode: 6
-40 °

Auto focus

2 Rotating prisms: 4 linear + 8 facet prism, dynamic prism morph , indexable
with macros

Frost

Dimming: 0-100% linear dimming

Shutter: mechanical with various speed

Protection rating

IP66

Display

Battery operated for fast addressing, 15 seconds standby auto lock

Pan/tilt disengage (hold Left arrow and Right arrow buttons)

Software

Upgrade with DMX

Remote reset DMX address and fixture by DMX

Run time of fixture and light source

3 Control channel modes: 27/25/39CH

Auto thermal protection circuit

Control
Input signal isolation
RDM protocol

Electric parameter
AC200-240V, 50/60Hz
Power: 800W

Dimension and weight
Product dimension: 468x370x774mm
Packing dimension (carton): 890x570x535mm
Net weight: 43kg
Gross weight (carton): 50kg

Patent
Patented: optical system capable of beam, spot and wash modes

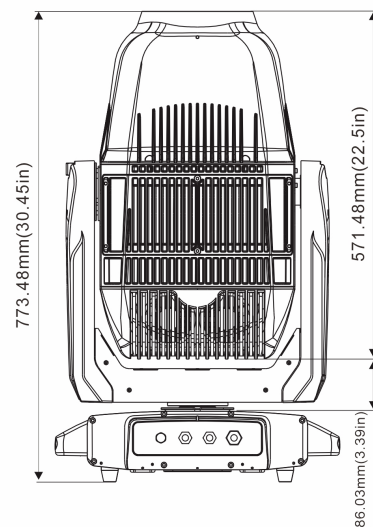
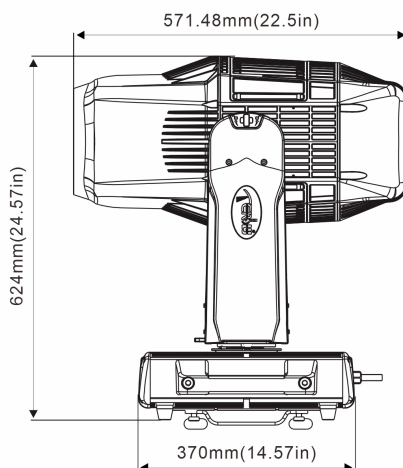
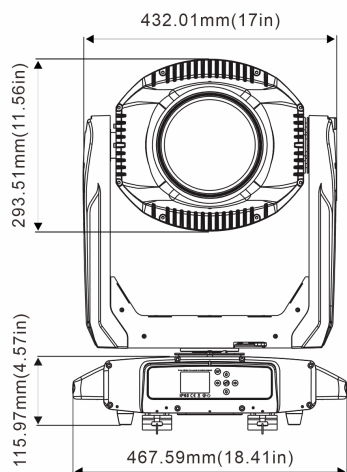
Colours/ Gobos

COLOR WHEEL: 

ROTATING GOBO WHEEL: 

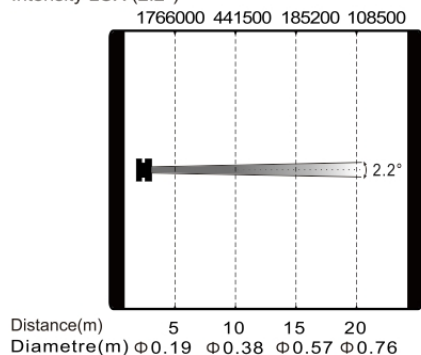
STATIC GOBO WHEEL: 

Dimensions

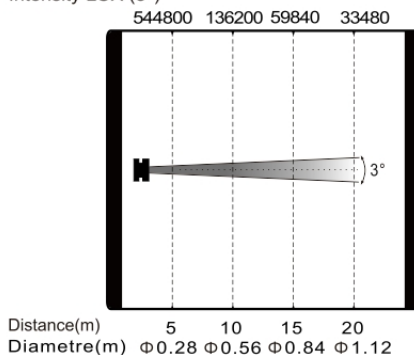


Photometrics

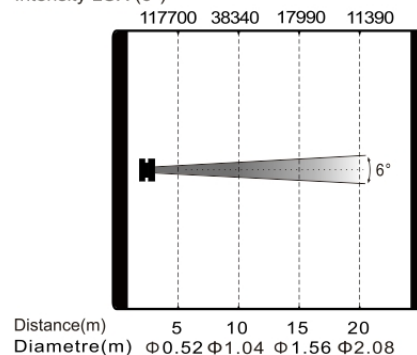
Min. Beam Mode
Intensity LUX (2.2°)



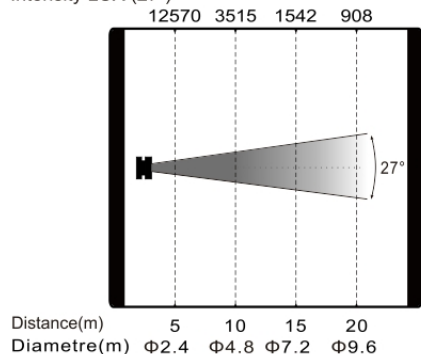
Min. Spot Mode
Intensity LUX (3°)



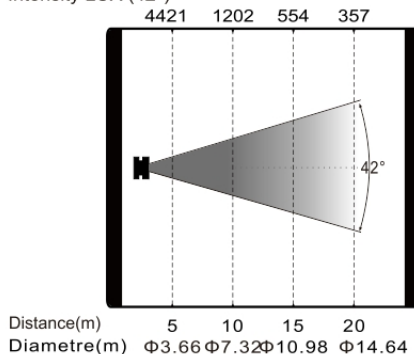
Min. Wash Mode
Intensity LUX (6°)



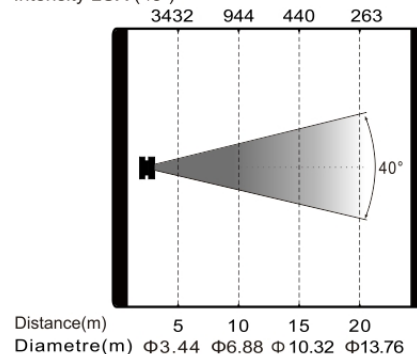
Max. Beam Mode
Intensity LUX (27°)



Max. Spot Mode
Intensity LUX (42°)



Max. Wash Mode
Intensity LUX (40°)



Errors and omissions are possible. All specifications are subject for change without prior notice.