



Indoor Cove ALVT-C1/C4



Product parameters

ALVT-C indoor Cove series is a high power, white LED, indoor linear cove fixture.

Available in 1' and 4' sections, it offers smooth linear dimming with ELV modules and 100-1% with most TRIAC dimmers. Featuring class-leading output, robust housing, and several color temperature options, it is the perfect choice for any cove, millwork, or signage application.

Color Temperature: 2700K, 3000K, 3500K, 4000K

Beam Angle: 120 °

Max Fixture Runs: 40 ' @120VAC/80'@240VAC+



Power Consumption: 20W(1') / 80W(4')

Total Lumens:

1' 934@2700K 1054@3500K 1143@4000K

4' 3136@2700K 4256@3500K 4572@4000K

Efficacy (lm/W): 46.7@2700K/3000K, 52.7@3500K, 57@4000K

CRI: >80

Finish: Anodized Brushed Aluminum (Black or White - Special Order Only)

Housing: Aluminum; Clear Polycarbonate Lens

Operating Temperature: -20 ° C to 45 ° C

Operating Voltage: 95-135V / 200-300V

Dimming: TRIAC + ELV

Fixture Connectors: Integral, 3 Pin Male & Female Connector

Rating: IP40, Dry Location

Weight: 1' 0.8kg/4' 3.2kg

Dimensions: 52mmx71.5mmx305mm/1229mm

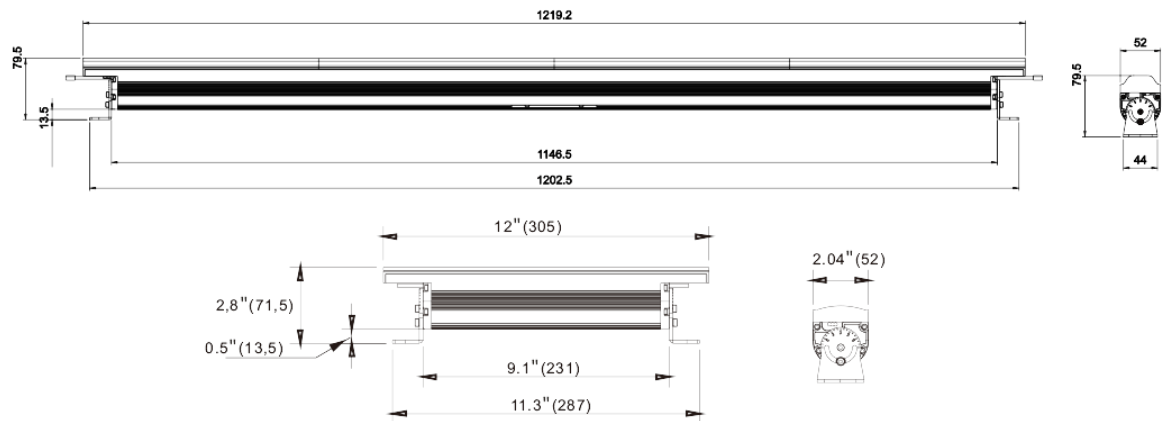
Colours/ Gobos

:

:

:

Dimensions



Errors and omissions are possible. All specifications are subject for change without prior notice.